

Software Boot Camp Worksheet 1

Objective: Photoshop // Basic introduction & workspaces

Tutorial links:

Getting Started (GS) What is Photoshop CS5?

<http://tv.adobe.com/watch/learn-photoshop-cs5/getting-started-gs-what-is-photoshop-cs5/>

GS-01: Switching and saving workspaces

<http://tv.adobe.com/watch/learn-photoshop-cs5/g01-switching-and-saving-workspaces/>

Activity 1

Create and name your own workspace in Photoshop. Watch the *GS-01: Switching and saving workspaces* tutorial and follow the instructions below to rearrange, explore, create and name a workspace for yourself.

Exploring the Photoshop workspace

You can customize the layout and functionality of the Photoshop workspace by using the workspace switcher.

To open Photoshop and explore the workspace:

1. Start Adobe Photoshop.

If you don't see the Photoshop icon, choose Start > All Programs > Adobe Photoshop CS5 (Windows) or look in either the Applications folder or the Dock (Mac OS).

2. From the workspace switcher menu, confirm the option is set to Essentials. Choose Reset Essentials to restore the default workspace (Figure 1).

The Photoshop workspace appears as shown in the following illustration.

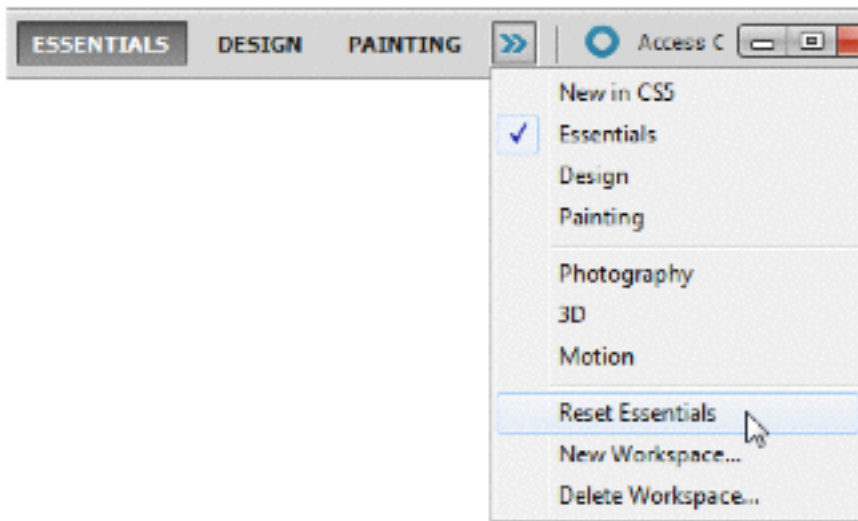


Figure 1 Workspace switcher menu

3. The default Essentials workspace in Photoshop (Figure 2) displays an Application bar at the top of the screen. In the Application bar are the Photoshop application icon, the main menu (Windows only), application controls, View controls, the workspace switcher, and a button to access CS Live. Below the Application bar is the Options bar, with the Tools panel on the left, panels, and one or more document windows that are opened separately.

The *main menu* across the bottom of the Application bar organizes commands in individual menus.

The *Options bar* displays options for the currently selected tool.

The *document window* displays the file you're working on.

The *Tools panel* contains tools for creating and editing images, artwork, page elements, and so on. Related tools are grouped together.

Panels help you monitor and modify your work. An example is the Layers panel. Certain panels are displayed by default, but you can add any panel by selecting it from the Window menu. Many panels have menus with panel-specific options. You can separate, group, stack, and dock panels into your preferred layout.

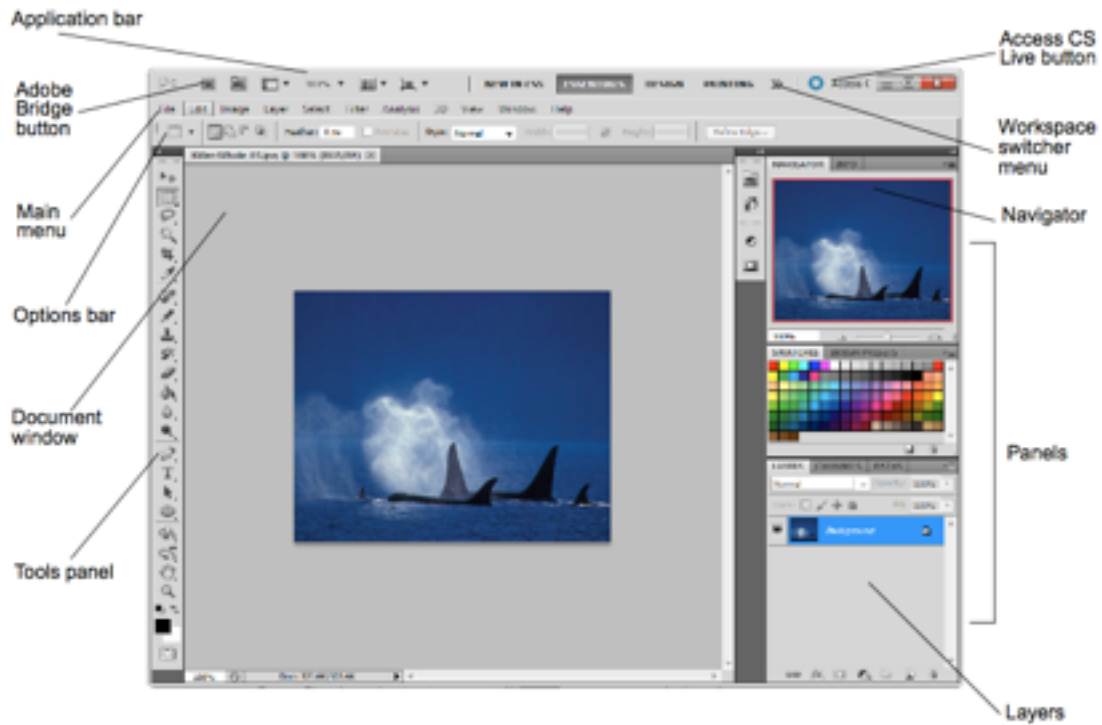


Figure 2 Adobe Photoshop CS5 interface

You can restore the default workspace at any time by choosing Window > Workspace > Essentials (Default) (Figure 3) or by choosing Reset Essentials from the workspace switcher menu (Figure 1).

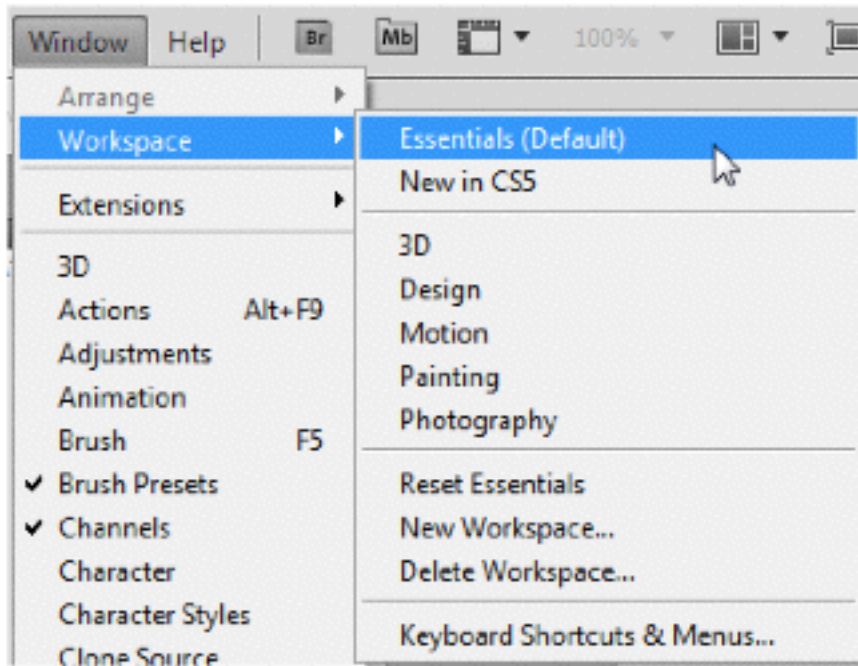


Figure 3 Selecting the default workspace

Customizing your workspace by using the workspace switcher

You can save the current size and position of panels as a named workspace and restore that workspace even if you move or close a panel. The names of saved workspaces appear in the Window > Workspace menu.

To customize the workspace:

1. To create a custom workspace, move and manipulate the interface layout in Photoshop (Figure 4).
2. From the Workspace Switcher menu, select New Workspace (Figure 5).

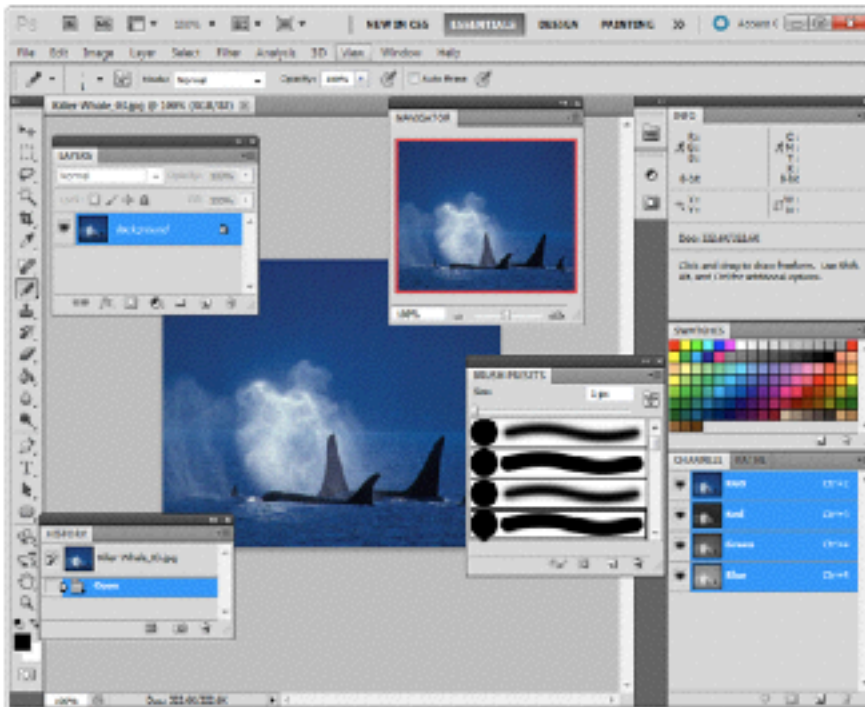


Figure 4 Custom interface layout

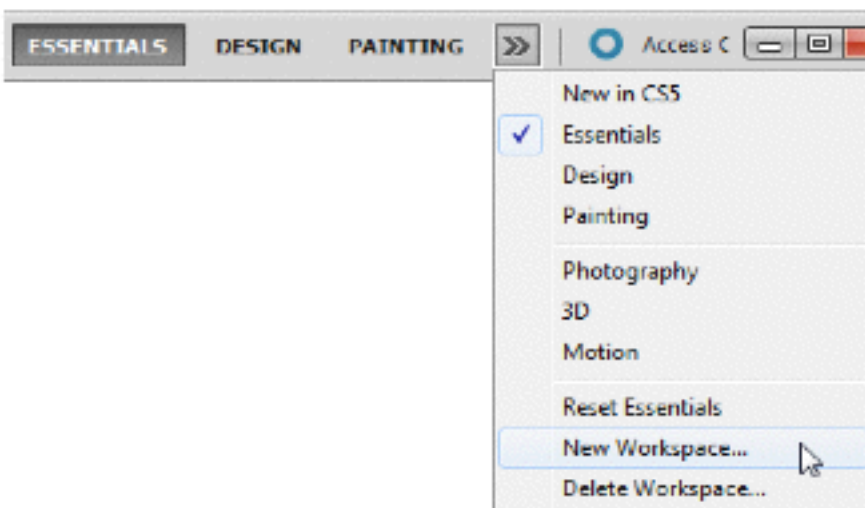


Figure 5 Creating the New Workspace

The New Workspace dialog box appears (Figure 6).

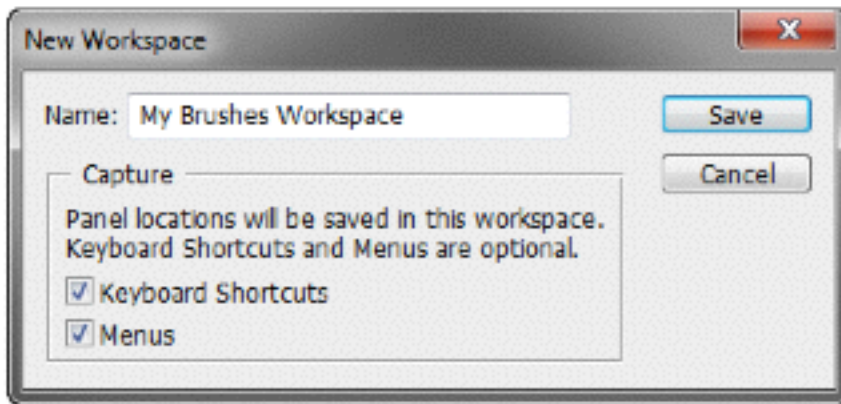


Figure 6 New Workspace dialog box

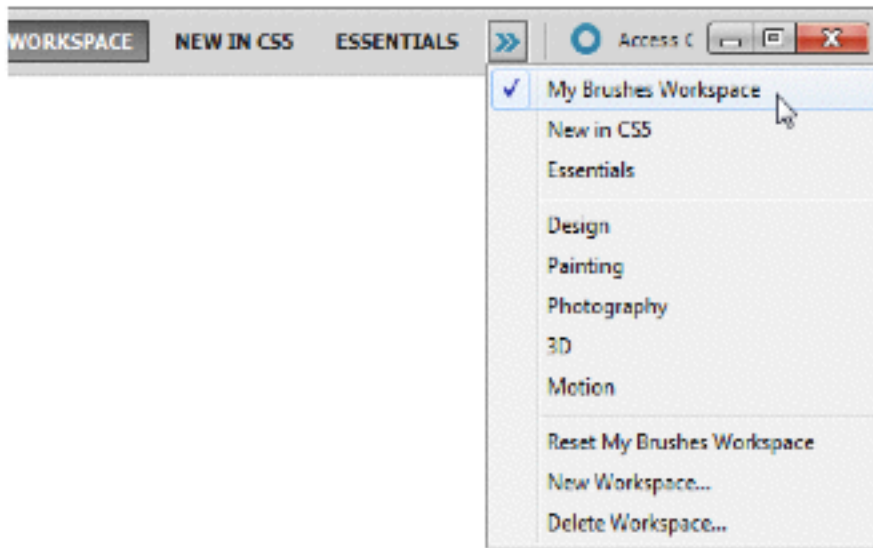


Figure 7 Reselecting a saved workspace

3. Name your workspace and select the Capture options to save in the workspace (Keyboard Shortcuts and Menus)
4. Click Save.

Your new workspace appears in the upper-right corner of the interface in the workspace switcher area. (Figure 7).

5. Open the workspace switcher menu.

Even if you change to another type of workspace, at any time you can return to your saved workspace by reselecting it from the workspace switcher menu.

Photoshop also records any changes you make to your task-specific or saved layouts, so that if you switch to a different workspace and then switch back during an editing session, the panels will be exactly where you left them.

You can restore the saved workspace at any time by choosing Reset [your named] Workspace from the workspace switcher menu (Figure 7).

from <http://www.darienps.org/dhswebdesign/pdf/photoshopguide.pdf>
© 2010 Adobe Systems Incorporated
Overview of Adobe Photoshop CS5 workspace

Activity 2

1. Go here: <https://digitaluconn.wordpress.com/boot-camps/tools-panel-and-layer-effects-and-styles/>
2. *Look over the following links and experiment with different tools on the tool panel and with layer styles effects.*

A comprehensive look at the **Tools Panel** : <http://helpx.adobe.com/photoshop/using/tools.html>

Add fun effects to your layers using **Layer Styles**: <http://helpx.adobe.com/photoshop/using/layer-effects-styles.html>

Can you make a self-portrait as cool as Dave's?

